

Plan to restore mansion

RESTORATION specialist Morgan Restoration has unveiled an historic project, the redevelopment of the Georgian Baldwyns mansion, at Baldwyns Park, in Kent.

The development will provide 14 one, two and three-bedroom apartments, each designed in a unique style to complement the exterior of the 19th-century Grade II Listed mansion.

Until 1759, Baldwyns Mansion Villa was owned by Sir Edward Hulse, physician to King George II. Later, the estate was sold to the Minet family, who resided there until the early 19th Century, when the house was rebuilt in a manner typical of Sir John Soane.

In 1889, the 750-acre estate was leased to Sir Hiram Maxim, who contributed significantly to the development of flying machines and the concept of flight. Most of his

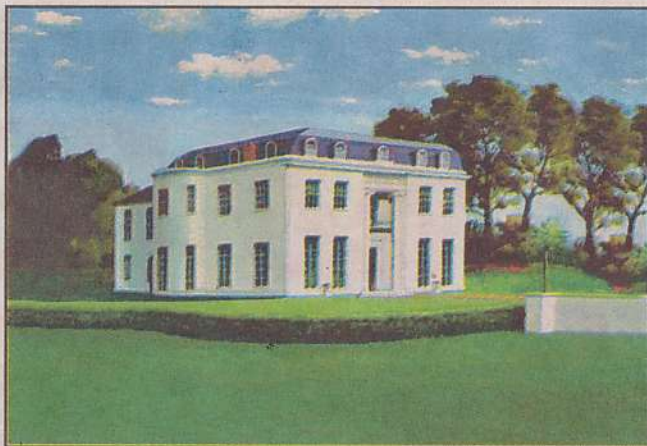
time at Baldwyns was devoted to the development of an early flying machine, which flew publicly for the first time on July 31, 1894.

The house and estate were bought by the London County Council in 1894 and were later taken over by Bexley Hospital. Baldwyns served as part of this institution for nearly 100 years.

The Grade II Listed Regency mansion suffered serious neglect in later years and was placed on the at risk register.

Situated 15 miles from London, the Grade II Listed Baldwyns is being restored to provide 14 prestigious apartments in this enviable setting.

Located in the best part of this 38-acre Green Belt site, Baldwyns is set within five acres of woodland and adjacent to playing fields. Woodland walks and cycle paths run across the site linking into the



● **HISTORY: Baldwyns Mansion is being restored**

40-mile Green Chain Walk. Dartford Golf Course is adjacent, set in the environs of Dartford Heath, one of Kent's largest ancient common lands wooded with oak, birch and hawthorn. Residents can also

choose to join the private members' sports club, whose sports fields and facilities are literally on the doorstep.

Prices range from £250,000 to £450,000. Call Morgan Restoration on 01322 866800.